

Highlights:

- Powerful sound experience
- High sound pressure levels with tight driver response
- Modern & elegant design
- Impact resistant
- DuraCoat™ texture paintwork
- Horizontal and vertical mounting
- Inclined Speakon connectors
- 70V/100V transformer option available
- Optional clever U-bracket (inclination of -90° to +35°)

Product information:

The most compact VEXO100 series models pack a surprising punch. Compared to our VEXO8, the VEXO108 plays in a different league, offering increased brilliance and a higher power output in a similar compact form factor.

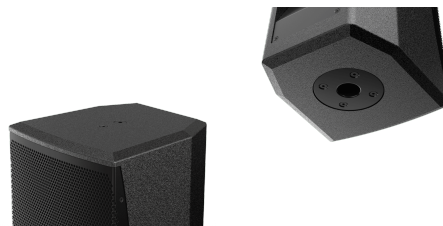
The VEXO1xx series are compact high performance 2-way loudspeakers and come in 4 different (active or passive) models. The low-frequency transducer, which is made out of high-quality materials, is combined with a 1.4" (VEXO108) or 1.7" (VEXO110, VEXO112 & VEXO115) voice coil compression driver, enabling high sound pressure levels and a tight driver response with a rotatable 90° x 70° coverage pattern for a wide range of applications.

Thanks to the unique driver composition, the VEXO108 delivers a clear and natural sound with an RMS power of 200 Watts and a maximum power of 800 Watt. The frequency response ($\pm 3\text{dB}$) starts from 75Hz up to 20 kHz and the sensitivity (1W/1m) reaches 95dB while a maximum continuous sound pressure level from 118dB can be achieved.

Using an optional 70V/100V line transformer enables the VEXO series to be used in 70V or 100V systems. By removing the backplate and replacing it with a 70V/100V backplate on which the module is integrated, the high-performance loudspeaker is able to apply in a 70V/100V system.

The construction of the cabinets is made of 15 mm plywood with a polyurethane coating, making them resistant to any impact. The front side of the cabinet is finished with a powder-coated steel grill with acoustical foam. The VEXO108, unlike its bigger brothers, does not come with a recessed carry handle on the rear side. However, positioning and suspension of the speaker are easily achieved by using the standard 35 mm pole adapter on the bottom and the M10 rigging points. Two speaker connectors provide reliable connections with easy link-through to cabinets.

The optional Clever U bracket allows mounting the high power 2-way cabinet both horizontally and vertically. An inclination of -90° to +35° ensures an optimal positioning. The optional MBK bracket even allows mounting the VEXO series to the ceiling which gives the opportunity to install the loudspeaker cleanly in any environment.



Impedance:

Ω 8 Ohm

Applications:

- Bars & Restaurants
- Education
- Clubs
- Sporting facilities
- Events
- Concert venues

System specifications:

Speaker type		2-way
Peak power handling		800 W
Program power handling		400 W
RMS/AES power handling		200 W
Impedance		8 Ω
Sensitivity (1W/1m)		95 dB
Sound Pressure (Max. W/1m)		118 dB
Frequency	Response (\pm 3 dB)	70 Hz - 20 kHz
Crossover	Type	Passive built-in
Dispersion	Horizontal	90°
	Vertical	70°
Drivers	HF	1.4" Compression driver
	LF	8"

Product Features:

Dimensions		244 x 425 x 256 mm (W x H x D)
Weight		9.4 kg
Construction		15 mm high-quality plywood
Finish	Cabinet finishing	Polyurethane coating
Front finish		Powder coated steel grill with acoustical foam
Mounting & handling	Rigging points	4 x M8 & 4 x M6 (rear) & 1 x M6 (top) & 1 x M10
	Stand fitting	35 mm pole adapter on bottom
Accessories	Optional	70V/100V transformer module
		MBK108V - Mounting bracket for VEXO108
Colours		Black & White

Variants:

- VEXO108/B - Black version
- VEXO108/W - White version

